



Hard Chess Puzzle # 0119

By

G Bud Games
<https://gbud.in>

January 26, 2022

Contents

Hard Chess puzzle # 0119 - Mate in 3 moves	3
Hard chess puzzle 0119	3
Solution to hard chess puzzle 0119	4
Solution 1	4
Right moves for the solution to the hard chess puzzle 0119	8
Explanation for the moves	8
Categories of hard chess puzzle 0119	8
hard chess puzzle 0119 chart	9
How to view the solution to hard chess puzzle 0119	11
How to get help for moves in the hard chess puzzle 0119	12
Play chess for free	13

List of Figures

1	Solve this hard chess puzzle 0119. Mate in 3 moves @ https://gbud.in/g4g4yj3	3
2	Solve this hard chess puzzle online with solution @ https://gbud.in/g4g4yj3	3
3	Initial board position of hard chess puzzle 0119	4
4	Rc1	5
5	d2	5
6	Rfxe1	6
7	fxe1=Q+	6
8	Rxe1	7
9	dxel=Q#	7
10	hard chess puzzle 119 chart 1	9
11	hard chess puzzle 119 chart 2	10
12	hard chess puzzle 119 chart 3	10
13	hard chess puzzle 119 chart 4	11
14	Click the solution button to view solutions @ https://gbud.in/g4g4yj3	11
15	Click the help button to get help on next move @ https://gbud.in/g4g4yj3	12
16	Solve more hard puzzles @ https://gbud.in/chshdpz	12
17	Solve other puzzles @ https://gbud.in/chsgppz	12
18	Play chess online for free. Solve puzzles and play with friends	13
19	Solve this puzzle online by scanning this QR code or go to the link below	14

Hard Chess puzzle # 0119 - Mate in 3 moves

Solve this hard chess puzzle and improve your chess games through improvement of your chess strategies and chess tactics. This hard puzzle is a subset of [kids games](#).

Puzzle No : 0119

Difficulty level : hard

Description : Mate in 3 moves

Next Move : Black

Player level : Advanced

Short URL for puzzle : <https://gbud.in/g4g4yj3>

Hard chess puzzle 0119

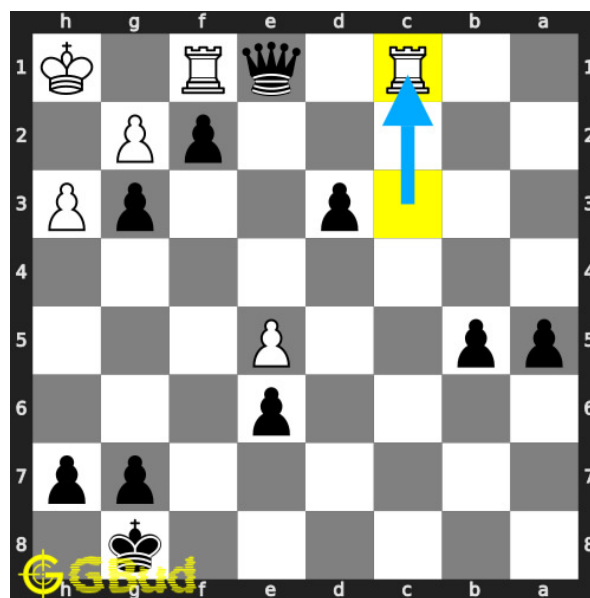


Figure 1: Solve this hard chess puzzle 0119. Mate in 3 moves @ <https://gbud.in/g4g4yj3>



Figure 2: Solve this hard chess puzzle online with solution @ <https://gbud.in/g4g4yj3>

Dont forget to check out [chess puzzles](#), [easy chess puzzles](#), [medium chess puzzles](#), [hard chess puzzles](#) and [chess puzzles collections](#) .

Solution to hard chess puzzle 0119

At this puzzle, next [move](#) is by [Black](#). The objective of the puzzle is to mate in 3 moves.

See the interactive solution at the [puzzle page](#)

Solution 1

Initial board position This is the initial board position of hard chess puzzle 0119.

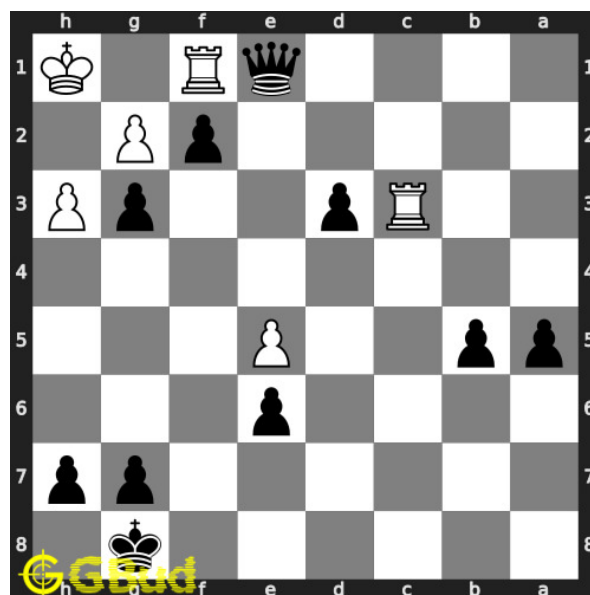


Figure 3: Initial board position of hard chess puzzle 0119

Move 1 Move by white

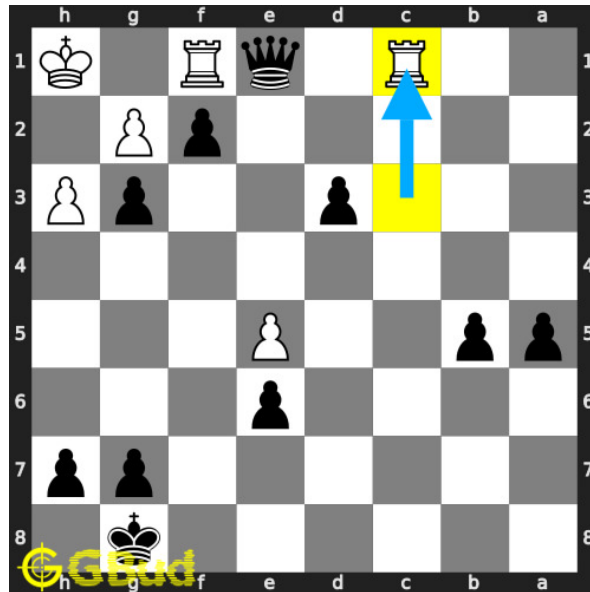


Figure 4: Rc1

opponent wants to capture your queen and pawn. they try to sacrifice their rook to attract your queen.

Move 2 Move by black

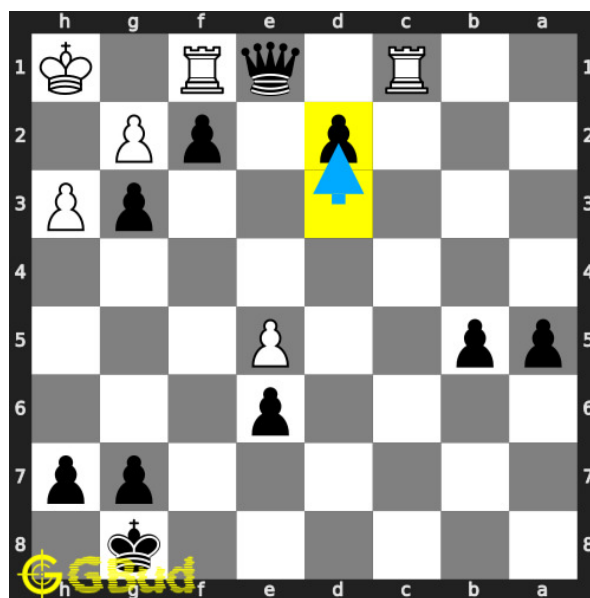


Figure 5: d2

your pawn advances to give support to queen.

Move 3 Move by white

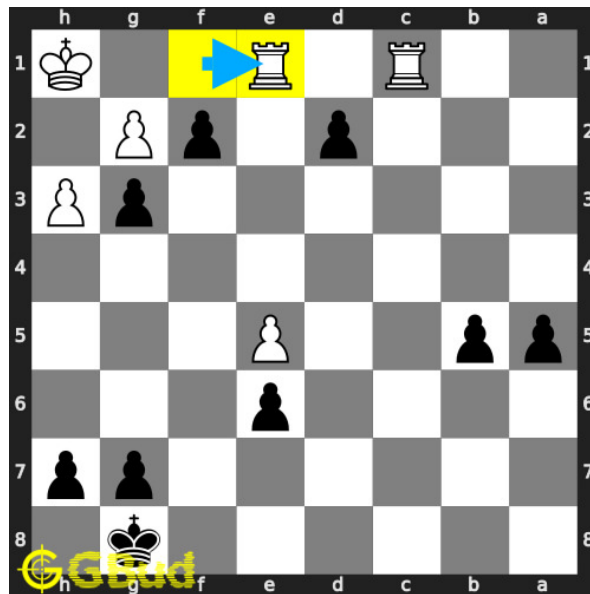


Figure 6: Rfxe1

opponent's **rook** captures your **queen** and forms a **battery** of rooks.

Move 4 Move by black

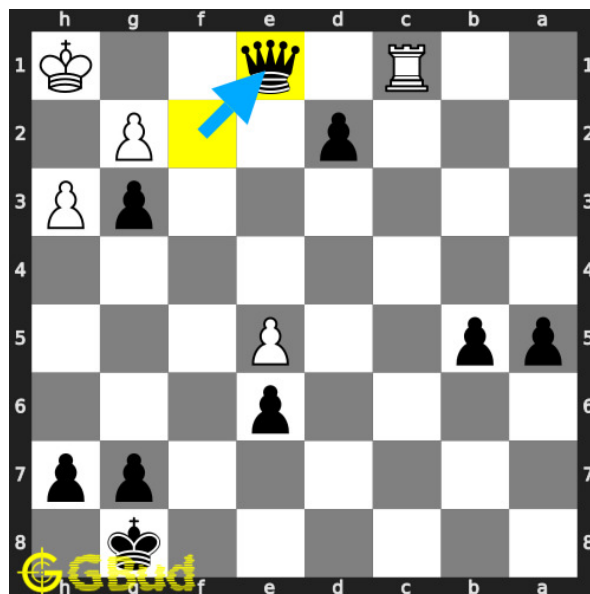


Figure 7: fxe1=Q+

pawn in **f file** is promoted to a **queen** after capturing the **rook**. it now **forks** opponent's **king** and **rook**.

Move 5 Move by white

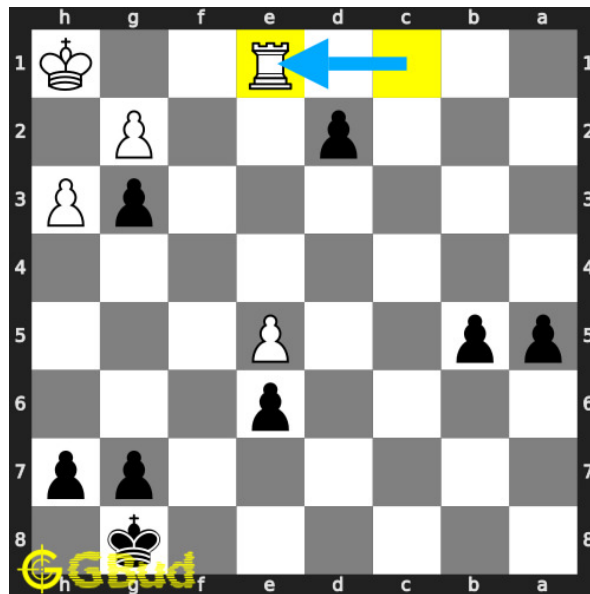


Figure 8: Rxe1

opponent's **rook captures** your **queen** as this is the only legal **move** available.

Move 6 Move by black

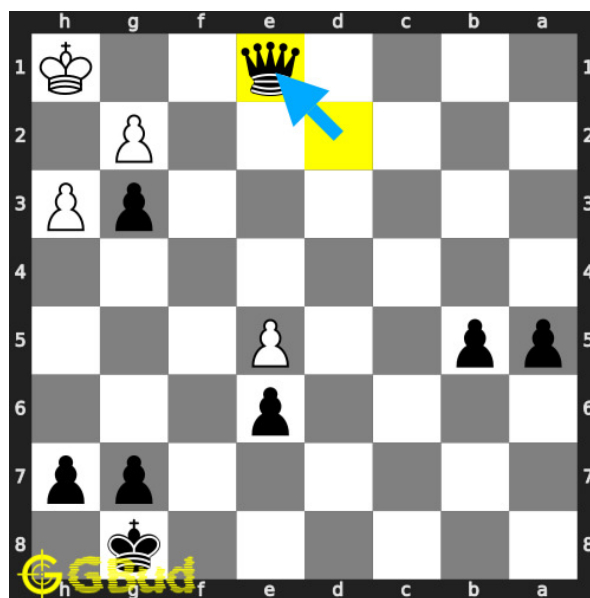


Figure 9: dx1=Q#

your **pawn captures** the opponent's **rook**, gets promoted to a **queen** and **checkmate**. opponent's **king** can't **move** due to the attack from your **pawn**. this is how you can **mate** in 3 **moves**.

Right moves for the solution to the hard chess puzzle 0119

Based on the objective of the puzzle, you have to make the right moves. Following are the right moves

1. d2, fxe1=Q+, dxe1=Q#

Explanation for the moves

1. Rc1 - Opponent wants to capture your queen and pawn. They try to sacrifice their rook to attract your queen.
2. d2 - Your pawn advances to give support to queen.
3. Rfxe1 - Opponent's rook captures your queen and forms a battery of rooks.
4. fxe1=Q+ - Pawn in f file is promoted to a queen after capturing the rook. It now forks opponent's king and rook.
5. Rxe1 - Opponent's rook captures your queen as this is the only legal move available.
6. dxe1=Q# - Your pawn captures the opponent's rook, gets promoted to a queen and checkmate. Opponent's king can't move due to the attack from your pawn. This is how you can mate in 3 moves.
7. For right move - You utilised the promotion of pawn effectively and won the game. Good observation of the board
8. For wrong move - You could have won the game by series of promotion and sacrifice. Try again

Categories of hard chess puzzle 0119

This hard chess puzzle falls in these categories.

1. [Hard chess puzzles](#)
2. [Sacrifice puzzles in chess](#)
3. [Mate in 3 puzzles in chess](#)
4. [Endgame puzzles in chess](#)
5. [Promotion puzzles in chess](#)
6. [Battery puzzles in chess](#)
7. [Strategy puzzles in chess](#)
8. [Pawn puzzles in chess](#)
9. [Rook puzzles in chess](#)
10. [Queen puzzles in chess](#)

hard chess puzzle 0119 chart

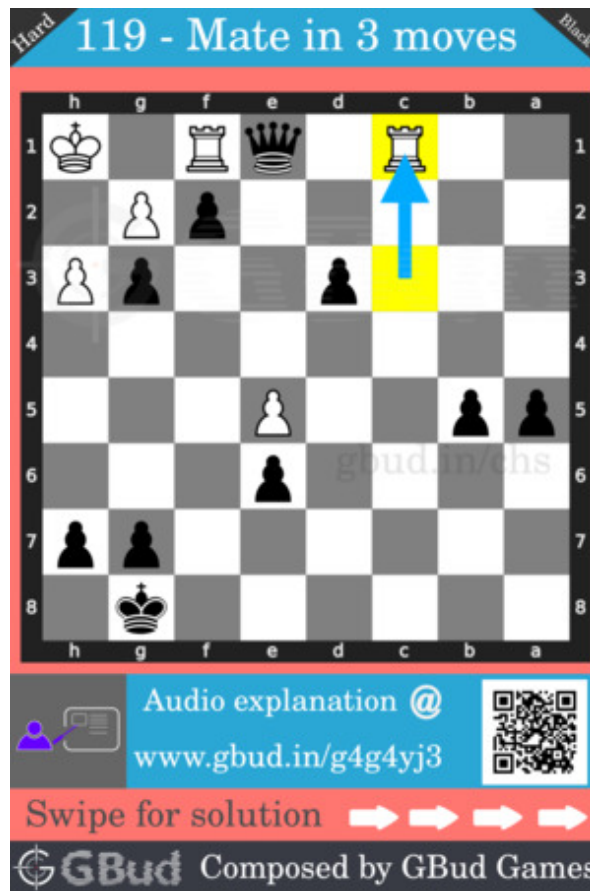


Figure 10: hard chess puzzle 119 chart 1



Figure 11: hard chess puzzle 119 chart 2



Figure 12: hard chess puzzle 119 chart 3

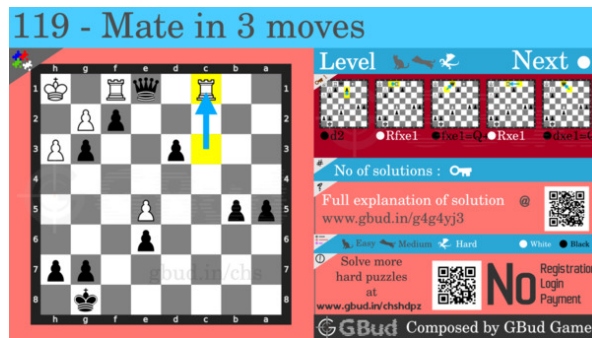


Figure 13: hard chess puzzle 119 chart 4

How to view the solution to hard chess puzzle 0119

To view the [solution to this puzzle](#), follow the steps given below

1. Go to the [puzzle page](#)
2. Click the solution button (Key as shown [below](#)) to view the solution



Figure 14: Click the solution button to view solutions @ <https://gbud.in/g4g4yj3>

How to get help for moves in the hard chess puzzle 0119

To get help or the possible next moves in the puzzle, , follow the steps given below

1. Go to the [puzzle page](#)
2. Click the help button (exclamation mark as shown [below](#)) to get help or suggestion on next possible [move](#)



Figure 15: Click the help button to get help on next move @ <https://gbud.in/g4g4yj3>



Figure 16: Solve more hard puzzles @ <https://gbud.in/chshdpz>



Figure 17: Solve other puzzles @ <https://gbud.in/chsgppz>

Play chess for free

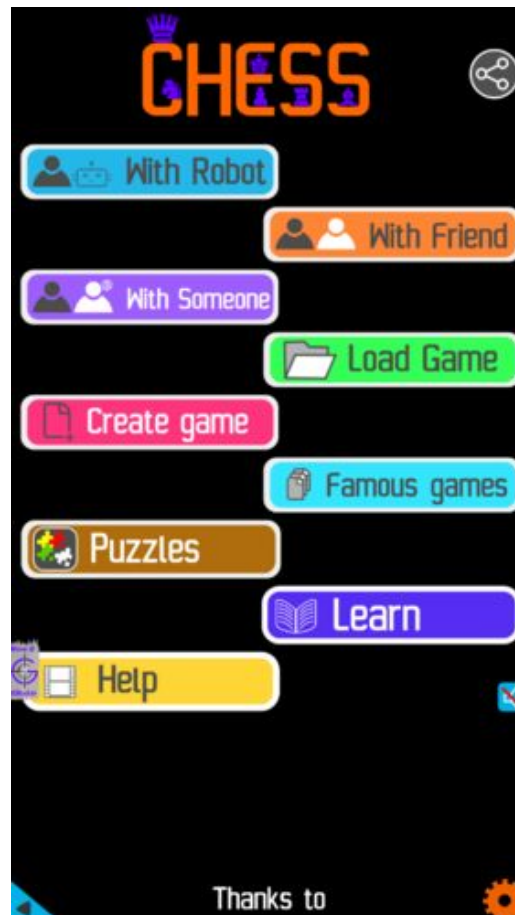


Figure 18: Play chess online for free. Solve puzzles and play with friends

Play chess for free at <https://gbud.in/chs>

We present you a platform to play chess online with friends for free. No need to install any app. You can play chess for free without registration or login.

Simple. You can do several chess related activities.

1. [solve chess puzzles](#)
2. [learn about chess](#)
3. [play chess with computer](#)
4. [play chess with friend](#)
5. [create your own chess games](#)

6. [fen viewer](#)
7. [fen editor](#)
8. [fen generator](#)
9. [pgn viewer](#)
10. [chess board editor](#)
11. [view famous chess games.](#)



Figure 19: Solve this puzzle online by scanning this QR code or go to the link below

<https://gbud.in/g4g4yj3>

Read the latest article on Hard Chess puzzle # 0119 - Mate in 3 moves by scanning this QR code or click the link

Previous article : « [Hard Chess puzzle # 0118 - Mate in 3 moves](#)

Next article : [Hard chess puzzles](#) »

[Back to top](#)

[Contact Us](#)